



Detached Bungalow

4 Bedrooms

3 Reception Rooms

Flexible Accommodation

Large Driveway

Garage

Conservatory

Empire Property are delighted to bring to the market a rarely available 4-bedroom, 3 reception detached bungalow on Kitchener Street, Wishaw.

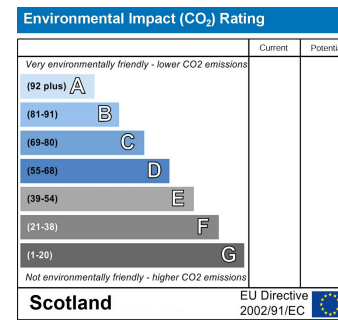
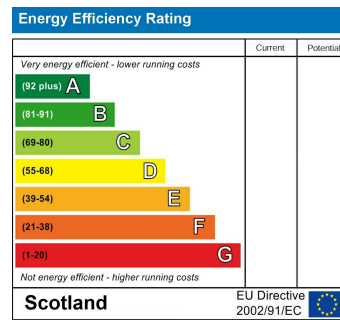
The property is located within walking distance to local shops, entertainment, and excellent travel links.

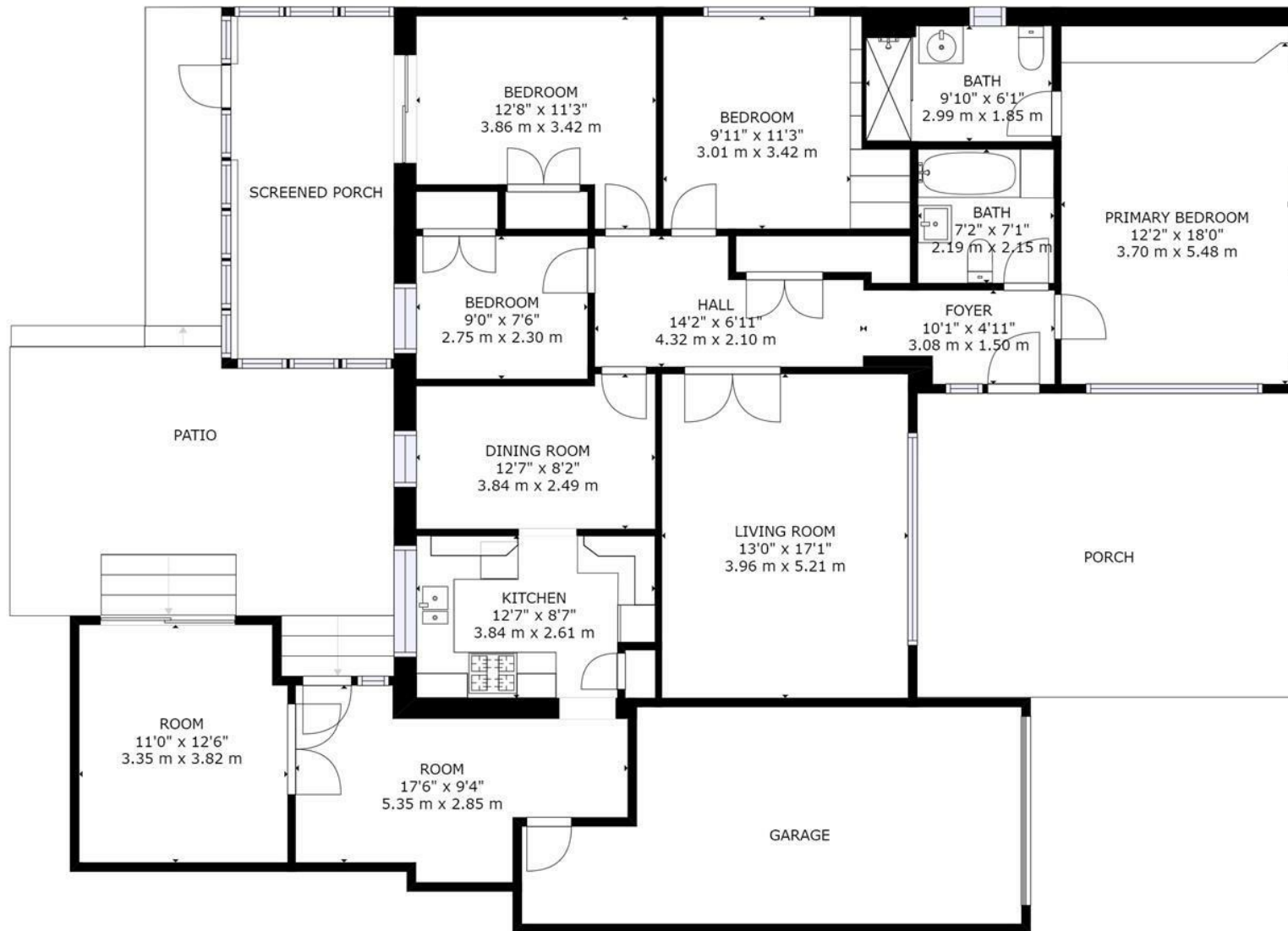
Spread over one level this spacious and flexible accommodations consists of: welcoming hallway leading to master bedroom with en-suite, family bathroom, 3 further good-sized bedrooms with storage, living room to front, bright kitchen, dining area and large reception room with patio doors to back garden and conservatory to the rear.

The property is further benefitted by double glazing, large driveway, integrated garage, gas central heating and large front and back garden areas.

This property offers the buyer an exciting opportunity to change and adapt the vast space to suit various family dynamics.

****Mortgage advice is available on this property****





FLOOR 1

GROSS INTERNAL AREA
 FLOOR 1: 1602 sq. ft, 149 m², EXCLUDED AREAS:
 PORCH: 156 sq. ft, 14 m²
 TOTAL: 1602 sq. ft, 149 m²
 SIZES AND DIMENSIONS ARE APPROXIMATE, ACTUAL MAY VARY.



